

# Avon

Produced and Edited by Jill Fysh

# Area

February 2012

**Inside this Edition**

Editorial

**From the Chair**

Area AGM

**Volunteer for Committee**

Ramblers Path Wardens

**From the Access Officer**

THE OLYMPICS SABOTAGE FOOT  
PATH NETWORK

**WESSEX WANDERER RAIL  
WALKS**

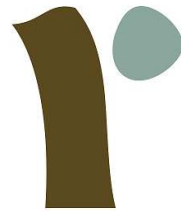
Avon Area Midweek Walks

**Vouchers to be won**

Bristol Group invite you to their  
Ceilidh

**By the Way**

Contact Details



**ramblers**  
at the heart of walking

# News

<http://www.avon-ramblers.org.uk>



## **Editorial**

As I reflect on 2011, as perhaps not being my best year. Having had the upheaval of not only having a new kitchen fitted, but the whole structure of it changed. This involved a builder, plumber that flooded my lounge (and there was I thinking plumbers repaired leaks not caused them) and an electrician. The result of which was a month of shuffling things about to enable us to cook even the most basic meals.

Not to mention the injury to my foot which despite X-rays showing nothing more than natural where and tear of the bones, has given me a good three months of painful limping and stopped me to do any, but basic walking since the end of September. This being caused by overzealous digging on my allotment, on a sunny afternoon, too hot to wear anything but sandals. I know! In retrospect I wonder what was I thinking of?

Then to end 2011 I had a millstone birthday which ended another decade of my life.

So now all the festivities of Christmas and new year are behind us, I for one am looking forward to 2012 with optimism.

In the summer I will be able to open my nice new French doors which were part of the Kitchen transformation, this will enable me to enjoy the garden to its full, even when inside.

I am hoping that my foot will heal completely, so I can enjoy the best of countryside walking again, but the best thing is, I will not be spending this year worrying about that big Birthday looming ahead of me, and as for digging on my allotment - has anyone got a rotorvator?

Hope you all enjoy a healthy, wealthy and happy 2012 - Jill Fysh- Editor

## **From the Chair**

It has been an eventful few months at the Ramblers. There have been a number of changes announced in the London office – the most notable of which is the resignation of the Ramblers Chief Executive. We have been told that the new Chief Executive is called Benedict Southworth – I understand he is a keen walker as well as a seasoned charity campaigner. Hopefully he will bring success to the charity in the next few years. Now we are in 2012 the Ramblers AGM (or General council) is approaching. This year a new Chair and Treasurer of the charity will be elected – this will provide a good opportunity to break from recent difficulties. I hope that the new incumbents to these positions will both be walkers and campaigners who have experience of volunteering at a local level. Given the board's current

recommendation for chair, I suspect this won't be the case.

Locally we have been making progress setting up the volunteer warden scheme in the Avon Area. This will be an exciting development for the local area when it kicks off in the next few months. David Waterstone has written more about this development in the newsletter. If anyone would like to become a local warden, please don't be shy about coming forward – it not only will help improve and maintain footpaths around where we live but will provide a new social outlet for members to meet.

We have a new Avon Area website ([www.avon-ramblers.org.uk](http://www.avon-ramblers.org.uk)). This has been designed to attract new members to into local ramblers groups and provide a source of ready information about our local activities as well as news from the

national charity. Local volunteers can now post news on the site without needing software and knowledge. There is a forum where any members can post questions, views and knowledge. Hopefully this will gradually become a popular destination for local volunteers and members. My thanks to go Ken Mill for his invaluable ideas and support in the development of the new website before he stands down as webmaster this year.

Finally, I mentioned in the last newsletter that Ramblers have linked themselves to HF Holidays. I understand that there are some discounts now available

to members, so if you are contemplating a holiday with this company it is worth checking out. It is also worth flagging up that Ramblers Holidays have maintained / increased their support to local areas and groups whilst dropping support for the national charity. Confusing? Yes, but fortunately it doesn't seem to have done any damage to sponsorship of local groups etc.

Happy walking in the New Year, and I hope to see as many of you as possible out and about this year.

\*\*\* Tom Elson

### **AVON AREA AGM SATURDAY 11 FEBRUARY**

The Avon Area AGM is on Saturday 11 February 2012 and will be held at: The Working Men's Club, The Street, Radstock, BA3 3PR grid ref: ST 388547

This year we have asked Norton Radstock Group to Host the Area AGM, since I have been secretary Norton Radstock is the only Group not to have done this.

On the edge of our Area and being a smaller group in membership numbers I feel that it is important that we ensure that they are kept in the fold and are embraced as part of our Area, and I hope that many of you will make the effort to attend this. I know that they will put an enormous amount of work and effort into the smooth running of the AGM and will appreciate the support of ever member that comes along to support them in this.

There is a Car Park belonging to the Club, and there is also a large Car Park at the rear of the club that can be accessed from Church Street. It has pedestrian access to The Working Men's Club in the bottom corner.

Bus Routes from Bath to Radstock at present stop in The Street, but road works could mean that people may have to get off Bus by Radstock College and walk down to The Street, (short walk). People will have to check the bus times, for the best information try the internet site "Traveline". If you are travelling from Bristol and do not have any transport please contact me tel. 01454 633001, email jillfysh@aol.com. I will try and arrange a lift for you.

A walk of about four miles, from the front of The Working Men's Club, will begin at 10:30 hrs Your walk leader will be Rose her contact number is 01761 435178. Food will be served from 12:30hrs in the Working Men's Club. Meeting to commence at 13:30hrs.

*(Continued on page 4)*

*(Continued from page 3)*

Our guest speaker from Central office will be Richard Colwill, Senior Systems Analyst/ Developer. Richard has written a short profile on himself which is published on the inside back cover of the Annual Report. **Jill Fysh - Secretary Avon Area Ramblers**

Volunteer - At the AGM all officers retire and are eligible to stand for re-election but these positions are not limited to being refilled by the retiree and any Ramblers member can stand for election for any position on the Committee. The volunteer committee positions are:

**Chair person, Vice Chairperson, Secretary, Treasurer,**

**Minutes Secretary, Access Officer, Membership Secretary,**

**3 Footpath Secretaries:- Bristol, South Gloucester or Banes**

**3 Planning & Countryside Protection officers, Press officer,**

**Information Officer, Web Master. Individual Members representatives**

If you would like to Stand for election of any of the Above please email me [jillfysh@aol.com](mailto:jillfysh@aol.com) please title it Area Officer, or phone me on 01454633001.

### **Avon Ramblers Path Wardens**

You will all be aware that Ron Phelps and I are working together on the establishment of a volunteer path maintenance team to work with the local authorities to maintain the present Public Rights Of Way (PROW) network. Our idea is to learn from the Cotswold Voluntary Warden service, which has been operating very successfully for 45 years, to put together a skilled team able to carry out all aspects of maintenance of paths and related path furniture.

Given the extent of the cuts that the current austerity programme is imposing on the Councils PROW Teams, it seems probable that if we do not succeed the network will start very rapidly to deteriorate.

rate.

I am glad to be able to report real progress towards our aim of establishing initially three teams of eight members each, spread out about ten miles apart east to west across our area. We have so far over forty volunteers. We need more because the geographical distribution is weighted towards the west, where there has been a tradition of volunteer working, and we must build up the east, where hitherto such a tradition has been weak, partly because of the past policies pursued by the relevant local authorities.

Ron and I will be discussing the detail of mobilisation with volunteers during January with a view to finalising team membership and identifying those willing to take a more active organisational

role.

We have raised sufficient funds to get going. We believe we need some £5,500 start-up funding, of which we can see £4,000 so far: Natural England, the Government organisation, has promised us £2,000 providing similar matched funding can be raised by Avon Area Ramblers, to which we think we can commit. We have identified several sources of funding, including Ramblers national organisation, which we shall be approaching for the remainder of funds needed over the next six weeks or so. We also have strong hopes of obtaining an Environment Grant from South Gloucestershire Council.

### **From the Access Officer**

The *Countryside and Rights of Way Act* became law in 2000. It's main impact was to establish areas of mountain, moor, heath and downland where the public had right of open access for quiet enjoyment of the countryside, commonly known as the "right to roam". The actual areas were established after a protracted mapping exercise. Local Access Forums were set up by the Act with one of their responsibilities to comment on the then Countryside Agency's proposals for access land. Our LAF (the JLAF, coincidentally mirroring the Avon Ramblers Area) was established in 2003. It was too late to assist in the mapping process but in time to contribute significantly to our Councils' *Rights of Way Improvement Plans*.

One of the more visible signs of the *RoWiPs* has been the development of the *Outdoorswest* web site ([outdoorswest.org.uk](http://outdoorswest.org.uk)). This aims amongst other things to provide readily downloadable walks throughout our area – free! In my experience you can find a few free walks on council and tourist websites but nothing very comprehensive. The other model of provision is the chargeable one. I note Ramblers central office are taking this approach. I think it is fundamentally flawed in that by the time you have paid your 50 pence you may well find that what you have purchased is not exactly what you want. So, all power to outdoorswest. Why not visit it today. However, you may find that some aspects of the site are not fully developed yet.

When Local Access Forums were set up there was a degree of cynicism about what they could achieve. In a few places this has been justified where Councils refuse to engage with the outdoors agenda. However, the experience is much more positive elsewhere including our own. Arguably the importance of the Rights of Way Act and LAFs has been subtly to reset the public perspective on access to the outdoors so that removal of the right to roam is now unthinkable. Additionally the JLAF, ably supported by its Secretary (The Councils'

We have sufficient flexibility within our plans, for example by delaying temporarily the purchase of expensive items like one brush cutter (about £550) to go forward with confidence. The aim is to purchase team tools during the first half of March so as to be able to start training and initial operations by the end of that month.

So, the final heave is upon us! This is perhaps the most important development our Area has faced. It is still not too late to join in, so if you feel up for it, give Ron or myself a call and we shall welcome you with open arms!

**David Waterstone.**

(Continued from page 5)

Outdoors Access Improvement Officer) has helped to ensure that outdoors access and the wider “green agenda” are prominent aspects of our Local Development Frameworks.

I have been prompted to review the above because earlier this year I stood down from the JLAF after eight years of membership some of it as Deputy Chairman. Ray Newbigin its dynamic Chairman and the excellent Robin Winfield the Vice-Chairman have also coincidentally called it a day. This gives the JLAF the opportunity to refresh itself and what better way could there be than its decision to elect our own David Waterstone as its Chairman. Interestingly the changes come as we approach the statutory decadal review of open access. We have yet to learn what format the review will take but the JLAF and the rest of us will have to remain on our toes if we are to ensure that there is no backsliding. And now I think of it there is coastal access, forests, canal towpaths, changes to planning laws, gating of neighbourhood paths, national trails, the Local Transport Plan, the decimation of Rights of Way Department.....

**Ron Phelps December 2011**

### ***THE OLYMPICS SABOTAGE FOOT PATH NETWORK***

From childhood reading two pronouncements have modified my view of life. The passionate cry of “Scoundrels and Nincompoops” whence Scumbrel and Inky-poops took their names; and the really seminal declaration of Mr Growser “This is disgraceful! It ought not to be allowed.” Marx may have needed Hegel and the Torah to develop a political philosophy; all I needed was *Larry the Lamb* and the *Pirates in the Deep Green Sea*.

Which brings us by an abbreviated logical trail to the request to lead a walk vaguely connected to the Olympic Games. The response was a few rhetorical answers to the question “why me?”

Because I deplore all kinds of athleticism?

Or because I regard the Olympics as an enormous waste of public money?

Or because I hold very strong views about exclusion from public land at Weymouth?

Shall I really enter into the Spirit of the Occasion?

Have we no members who thrill to the idea of naked greeklings smeared with oil having a wrestle? (Note the topically tactless reference to Juvenal's *graeculus essuriens*.)

Spending zillions to prove that some foreigners can run in circles faster than some Brits, while all the other Brits sprawl before the plasma does not do much for the Nation's Health. Nor will it do much for the Economy as the serious profits float off shore. A very small fraction of the expenditure would have put the path network in perfect order, boosting the local “micro economy “ and making some people happier and fitter.

To quote another role model, “ I, I, Corwhumph!”

**Peter Gould**

## WESSEX WANDERER RAIL WALKS (WWW) 2011

The ever popular rail walks based on the Bristol to Weymouth line enjoyed another successful season and thanks are due to Ann Light who co-ordinated the programme for the first time having taken over from Sue Blake (Dorset Area), the previous Walks Co-ordinator. Sue continued her support in various ways not least dealing with the finances and thanks are due to her too as well of course to the Leaders, Co-Leaders and those who supported us by going on the walks

For anyone in doubt I would hasten to add that the walks do not follow the railway line (sometimes an assumption) but start and finish at stations along the line. Indeed the only station not to be used this season was Trowbridge

Also the start of the walks are based on timings of both the down train and the up train where applicable and although Leaders try to limit it, it does mean that either those on the down train or those on the up train sometimes have a wait for the other train to arrive before the walks commence (still with me?)

Neither are we a Ramblers Local 'Group', simply a number of enthusiastic Ramblers' Leaders from Avon, Dorset, Somerset and Wiltshire Areas who enjoy the combination of train travel and walking. Subsequently we do not have an official committee although we do have (as mentioned above) a designated Walks Co-ordinator and Treasurer. However, an annual end of season/next season planning meeting is held to which all the Leaders and Co-Leaders are invited and a Chairman and Minutes Taker are appointed at the beginning of these meetings. And because we are not a Group we do not receive funding in our own right as a local Group would. However financial assistance from the four Ramblers' Areas involved plus a grant from the Community Rail Partnership has ensured that the programme of walks continues (for the time being at least). First Great Western again supported us by issuing complimentary tickets per walk for the Leaders and Co-Leaders and we are extremely grateful to all concerned

Unlike the usual Group walks, each Leader is asked to complete a questionnaire about their walks and these statistics show that the walks continued to attract non members and those new to Wessex Wanderer Walks as well as many regulars. In fact fifty-three people were on their first WWW this year and we enjoyed the company of walkers from Germany, Spain and Wales as well as other parts of England

Stats, of course, can show interesting facts such as the total number who participated in the walks was five hundred and nine, fifty of whom were non members but, of course, these were not all *different* people. Then on one walk 100% of the walkers used the train in both directions. However, there were only four people on the walk because of the atrocious weather! We continue to gain new members from people who have enjoyed walking with us though

Rail fares are set to rise yet again in January which could have an impact on future attendance but it is worth remembering that (at the time of writing, October 2011) up to four people can travel for the price of two on a Group Saver ticket (based on off peak fares) and Off Peak Day Return tickets which are normally only valid after 0930 on weekdays *are available on weekdays on the 0840 Bristol Temple Meads/*



“ the world’s  
more beautiful  
on foot...”

...with the original walking experts

For unforgettable sights, incredible experiences and memories that will last a life time – discover the world with us.

### **GROUP TRAVEL DISCOUNTS**

Especially for individual clubs or groups of friends we can help you organise your trip AND give you money off!

**Call us for more details**

Worldwide • UK • Cruise • Family • Private Groups

**01707 386804**

[www.ramblersolidays.co.uk](http://www.ramblersolidays.co.uk) ABTA V5094 Atol protected 0990 AITO

**TAILOR  
MADE  
GROUP  
WALKING  
HOLIDAYS**



Weymouth train *providing you are travelling beyond Frome*. Passengers who catch this train at Filton Abbey Wood, which departs there at 0823, are also eligible. (Fortunately Off Peak tickets are available at any time during weekends). However always check before travelling as things change, including departure times

With a senior rail card the cost of an Off Peak day return from Filton Abbey Wood to Weymouth for instance was £10.30 this year (2011) which I thought represented good value for money

Once more several Walk Leaders managed to find new and interesting routes even though we have been leading walks from the twenty stations along the line for many years. It is always a challenge when devising new linear walks in particular with having to take into account the times of both the down and up trains and the possibility of trains not running to time. Included in the programme were some themed walks, for instance a morning walk from Frome with time in the afternoon for Frome Festival events. And indeed most walks finish in time for refreshments before the return journey (rather than having long lunch breaks)

As an experiment this year a few walks were held on different days to the usual Wednesdays and Saturdays, one being on a Tuesday, two on Thursdays and one on a Sunday. The Sunday walk was particularly welcomed although because of the poor timing of trains from Weymouth on Sunday mornings, any Sunday walks need to be in the Dorchester/Upwey/Weymouth area. Once again some high summer dates when the trains tend to be very busy were omitted as was the week during the Glastonbury Pop Festival

We face a further challenge in 2012 when the Olympic Sailing events take place in Weymouth and Portland in August. At the moment we do not know if or how the train times will be affected so it has been decided not to hold any walks during that time. However, there may be some walks when the Para-Olympic sailing event take place in September

At the time of writing details of the 2012 programme were not available but it is anticipated that the 2012 season will commence on Saturday 19 May and finish on Saturday 13 October

However details of the walks will appear in future editions of Avon Area News, on the Avon Area website, Ramblers' Walksfinder and selected walks will appear in some Group programmes

Apart from this a copy of the full 2012 programme due to be published in April 2012 can be obtained by sending a stamped addressed envelope to The Walks Co-ordinator, 133 Conygre Grove, Filton, Bristol BS34 7HX

Wishing you all a good 2012. Once again you are invited to join us on a rail walk and enjoy a great sociable day out

Hope to see you on a walk

*Sylvia Popham*  
Vice President - Avon Area

## Electronic Mailings

### 3 x £25 Cotswold leisure Vouchers to be won

Electronic mailings are quick simple efficient and very cost effective in fact as a thank you to all who have chosen this method we are running three draws over the next few months each one giving a Cotswold Leisure Voucher for the value of £25. If you are not already signed up to your groups electronic mailing you will have your name entered in the draw as soon as you do, so you will qualify for entry subsequent draws.

The three draws will take place on 30 March, 30 April and 30 May one winner each time of a Cotswold Leisure voucher for the value of £25, the winner will be notified and the winners name will be published on the New Avon Area Web site.

*(Although Kingswood group have not yet started doing electronic mailing if you sign up and are willing to except electronic mail, you will be entered in the draw).*

As an Area over all we are now sending out about a third of our communications electronically, this is quite an achievement for the Area and we hope to increase this number vastly over the coming year. All new members who give an email address will automatically receive their mail this way.

Although we appreciate that not all of us have access to a computer and are unable to receive information this way, there are still a great number of you who do and have not yet signed up for this facility, so if this is you please contact your group secretary or email me [jillyfsh@aol.com](mailto:jillyfsh@aol.com) and title it electronic sign up, and I will pass this on to your group membership secretary. Or sign in on the Area web site.

I assure you that by signing up for electronic mailing you will only be emailed by your group with local ramblers information, and your email address will not be passed on to any other source.

There are a few times that it would be an advantage to be able to contact group members at short notice, like a walk being cancelled, or an event that has been offered at short notice and will be missed by waiting for the next mailing.

A majority of our new members have found out about us on our web site, and quite a few of us use it for news value, and most of us look at group web sites for walks and events so we are already receiving information electronically by choice.

**Jill Fysh –Secretray Avon Area Ramblers**

## **Bristol Ramblers**

*Invite you to come and Join them for a*

### **Ceilidh**

*on Friday 16th March 2012 from 19.30 - 23.30  
at Civil Service Sports Club, Filton Avenue BS7 0AT*

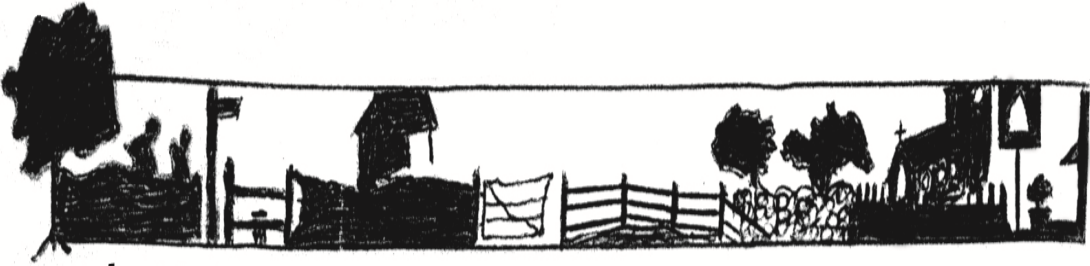
***£10 per person includes live band and  
ploughman's buffet.***

*Tickets available from Karen O'Sullivan.  
Please send cheque and a self SAE to Karen O'Sullivan,  
133 Filton Avenue, Horfield, Bristol BS7 0AT*

***by 3/3/2012.***

***Karen's contact details: Landline 0117 9498832.  
Mobile 07970822131***

*We need a minimum of 60 people to make this a viable proposition!*



## By The Way

### The Great Works of the Railway Navvies - Embankments

Nearly sixty years ago, I almost bought a cottage down in Somerset. But I didn't; for one thing, there was a right-of-way over the back garden!, and secondly, and more importantly, fifty yards from the front door was a sixty foot high embankment which was just high enough to shut out most of the attractive contryside beyond.

It had been built eighty years before and carried trains for just fifty years and now, and for untold years into the future, it would remain a barrier.

At that time, I didn't give a thought to the great labours of the railway navvies and just how they had managed to bring, and pile up, and tamp down such a mass of earth and rock sufficient to carry steam engines and carriages weighing hundreds of tons.

Railways, especially in the early days when locomotives weren't very powerful, required very, very gentle gradients. Brunel was exceptionally fortunate in being able to lay his line nearly dead level for the first eighty-five miles out of London.

However, during the hundred or so years of the railway age, the production of a workable track meant that hills had to be cut down, val-

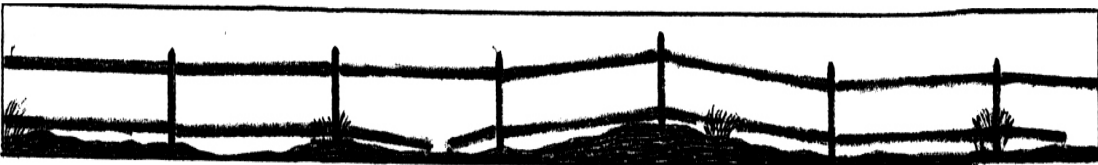
leys filled up, viaducts built, and great tunnels unhesitatingly undertaken - all by navvies and horses

In order to make an embankment it made sense to extract the necessary soil from the nearest possible place, such as a side cutting, so that the finished work would consist of a raised embankment with a ditch running on one or both sides.

More frequently the soil was carted from a cutting farther back. A light tram road was made from the cutting to the edge of the embankment, and at the extreme verge a stout piece of timber was fastened to prevent the wagons toppling over the edge when they dislodged their contents. A train of loaded trucks was brought up to about fifty yards from the embankment edge and a horse hitched to it. The trained horse then drew the truck at first at a trot and then at a gallop as if it were a canal horse pulling a barge, until a man running beside the horse unhitched it, allowing the truck to crash into the baulk of timber and tip over, ejecting its contents over the edge of the embankment. The truck was then righted and drawn back to the empty train waiting to be taken back to the cutting.

If the soil did not fall where required, the navvies soon rectified the matter with their spades.

### **Eric Robinson - Bath Group**



## Members of Area Council

Elected at The Avon Area AGM

12th February 2011

<b>Chairman</b>	<b>Tom Elson</b>	
Vice Chairman	Vacant	
<b>Secretary</b>	<b>Jill Fysh</b>	<b>01454-633001</b>
Minutes Secretary	Chris Gaymer	0117 9513319
<b>Treasurer</b>	<b>Adrian Noyes</b>	<b>01225-460989</b>
Foot paths Secretary Bristol	Peter Gould	
	PeterGould18@aol.com	
	<b>B&amp;NES David Waterstone</b>	<b>01225-427346</b>
	S. Glos Ron Phelps	01179-858825
<b>Access Officer</b>	<b>Ron Phelps</b>	<b>01179-858825</b>
Planning & Countryside Protection		BANES
David Waterstone	01225-427346	
	<b>Bristol Susan Carter</b>	<b>0117 9247872</b>
Information Officer	Maureen Johnson	
	maureenajohnson@hotmail.com	
<b>Membership Secretary</b>	<b>Jean Aellen</b>	<b>01454 419274</b>
Editor, Area News	Jill Fysh	01454-633001
	Jillfysh@aol.com	
<b>Publicity Officer</b>	<b>Julie Boston</b>	<b>julie@jboston.plus.com</b>
<b>President</b>	<b>Peter Gould</b>	
Vice Presidents	Sylvia Popham	
	<b>Peter Mills</b>	
	Marietta Starbuck	
	Kathleen Bullen	

**Articles for the June Issue of Area News are required by  
25 April, please email copy to  
jillfysh@aol.com**

For Identification Please type in Subject  
AAN Article

***Advertising rates for camera-ready artwork***

***Full Page £50 Half Page £30***

***Quarter Page £20 Circulation 2,000***

***Includes Web with direct link.***

The Ramblers' Association is a registered charity (England & Wales no. 1093577, Scotland no SC039799) and a company limited by guarantee, registered in England & Wales (no 4458492). Registered office: 2<sup>nd</sup> floor, Camelford House, 87-90 Albert Embankment, London SE1 7TW."

**Avon Area Midweek Walks Feb 2012 – May 2012**

Walks co-ordinator: Maureen Johnson

Tel: 01275 392440 Em:

[maureenajohnson@hotmail.com](mailto:maureenajohnson@hotmail.com)

Check information for public transport routes & times at Traveline 0871 200 22 33 (10p/min)

or [www.travelinesw.com](http://www.travelinesw.com).

\*\* Ring Maureen for possible carspace.

<u>Date</u>	<u>Title (AAW)</u>	<u>10am start at: or as specified</u>	<u>OSExp Map</u>	<u>Grid Ref</u>	<u>Length</u>	<u>Leader</u>	<u>Phone</u>	<u>Notes</u>
8/2/12	Portishead coast: birds & geology	<u>10.25</u> Meet Windmill pub, on arrival bus 359 at 10.22. <i>Bring your binoculars</i>	154	ST458767 or BS20 6JZ	4-5m	S Jarvis	0117 9654531	Bus 359 09:30 from Bristol Bus Stn; (660) Free carpark next to pub Pub lunch
8/2/12	Wedmore	Carpark nr Wedmore centre	141	ST437482 or BS28 4EJ	6m	D Owen	07966257878	Pub lunch. **
22/2/12	Bridge Yate Common	White Hart pub. Fig.of 8	155	ST684734	4m+4m	N Burlton	07791867512	Pub lunch. Bus (635)
22/2/12	Ashton Court	Ashton Ct Lwr carpark -entrance <i>just before</i> Dovecote pub	154	ST560714	5½ m	M Magro	01275 392643	Pub lunch Bus 354; 362; (352)
14/3/12	Limestone Link	Overndale Rd, Off B3115 at Tunley Hill	142	ST687592	6m	M Johnson	07960473378	Park in culdesac (Overndale) Picnic lunch **
28/3/12	Backwell Lake	Car park at the lakeside	154	ST478695	5½ m	M Magro	01275 392643	Picnic lunch **
11/4/12	Axbridge	The Square Carparkg on/near the Sq <i>Bring your binoculars</i>	141	ST433545	6m	M Magro	01275 392643	Pub lunch **
11/4/12	Corston incl. Stantonbury Hill	Top righthand carpark only at Globe Pub (A4T/A39)	155	ST701653	7½m	M Marsh	0117 986559	Pub at end of walk
25/4/12	Litton	Kings Arms pub	141	ST594546	5¾m	M Lambert	0117 9607266	Pub lunch or picnic lunch. **
9/5/12	Lansdown	Blathwayt Arms pub carpark. Fig of 8	155	ST725685	5m+3m	P Selby	01275 834152	Bus Bath P&R service from Milsom St. ½ mile walk to start. Pub lunch
9/5/12	Clevedon coastal walk	Meet at Clevedon pier	154	ST389718	6m	Dan	01454625313	Park on seafront. Bus (362) Pub stop.
23/5/12	Portishead Sculpture Trail	Public carpark <i>next to</i> Windmill Pub, Nore Road	154	ST458766	6m	Laura&Steph	01275844278/ 0117 9625148	Pub lunch Bus 359; (660) **
23/5/12	Wells	<u>10.20</u> Cathedral Green	141	ST552458	7m	C Loring	01275 332698	Bus 376. Pub stop /cafe